

Foreword

Ladies and Gentlemen,

At this period when the main topic of the day is the preservation of our Planet, developing countries have begun to effectively assert themselves in the green economy and to significantly participate in the reduction of greenhouse gas (CO₂) emissions.

In Africa, public authorities have taken steps to raise awareness of all sectors and all levels of society to protect the ozone layer including the CDM (Mechanism for Clean Development) and campaigns awareness on the rational use of electricity.

However, a problem remains, that of allowing as many, if not all, enjoy a healthy environment and access to potable water and electricity for its basic needs and/or production.

MedialectriX AG offers a better solution to this concern through its products and services more effectively through MERA, eSaver and ArcGIS which have found a here real justification.

Firstly, who are we?

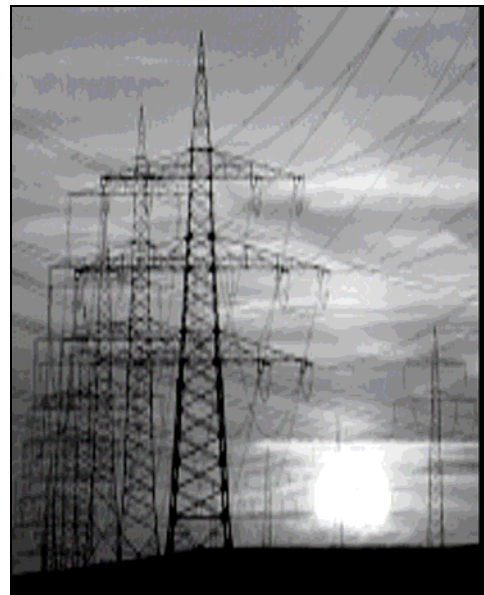
MedialectriX AG

Is a Public limited company which is specialized in Sales and Marketing of Products and Services under the Label MedialectriX

And especially:



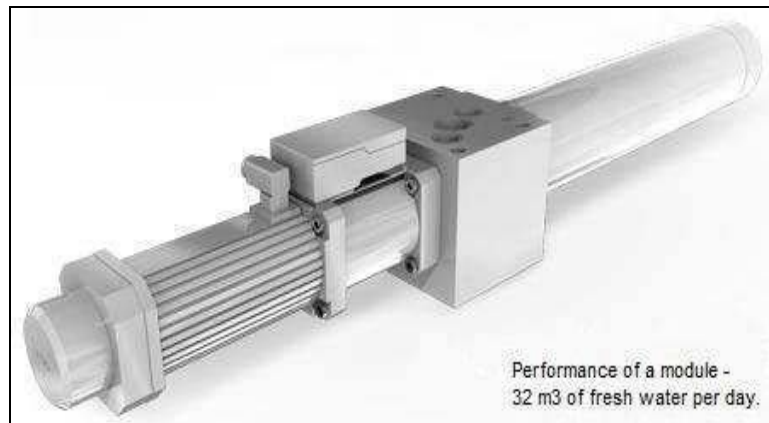
- ❖ 1 – Sales, Marketing and installation of a new generation of waste incinerators -"MERA" .The technology, “made in Germany” is a central recovery and energy production base for domestic and industrial waste.



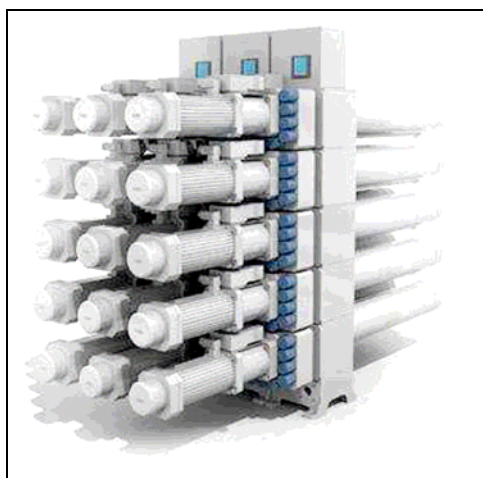
- ❖ 2- The Sales, Marketing and installation of the transformer eSaver that allows consumers (production machines, air conditioners, fluorescent lamps, stoves, etc) to reduce their consumption of electricity by at least 20% without influencing their functioning.



- ❖ **3- The Sales, Marketing and installation of the new Desalination Plant which is an original modular concept of highly efficient desalination plant has been now introduced and finds no counterpart on the market. Its output capacity ranges from 32 m³ of pure drinking water per day per unit.**

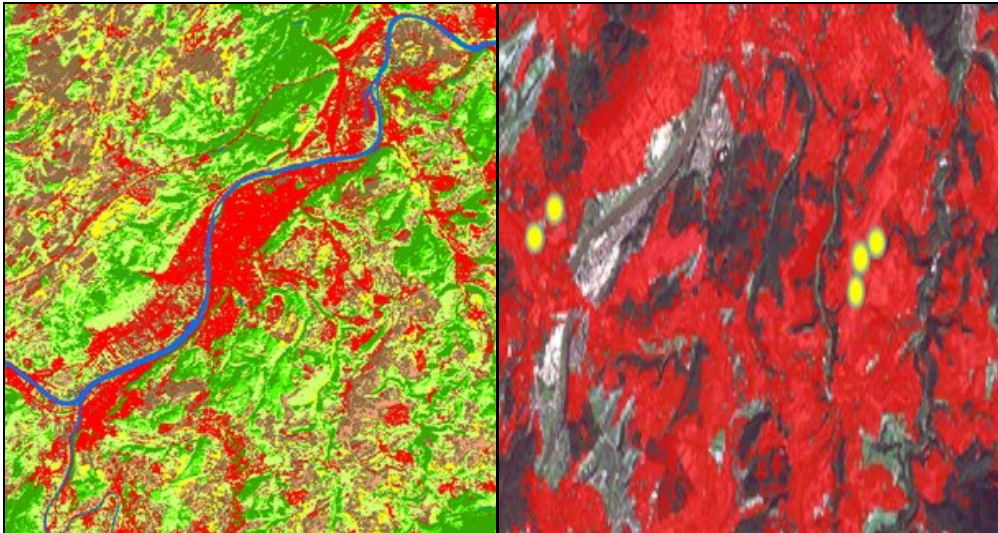


- each unit of the Plant is self-contained;
- small size of the Plant;
- possibility to connect modules ;
- minimal cost – now actually the lowest cost on the market;
- even the basic kit allows to effectively produce pure drinking water;
- ecology issues – no salinisation and no solid waste;
- low electric power consumption;
- no necessity to make special wasteland areas and correspondently possibility to install and to exploit inside main buildings.
- .easy to install – it only takes 4 hours to assemble a kit of 890 m³/day efficiency



❖ **4- Sales and Marketing from High-tech ArcGIS Software.**

This technology allows us to provide you with information on the speed and depth of groundwater in an area with an accuracy of 90% without having to move around the field defined by you.



a- ArcGIS assist you in studying environmental impacts.

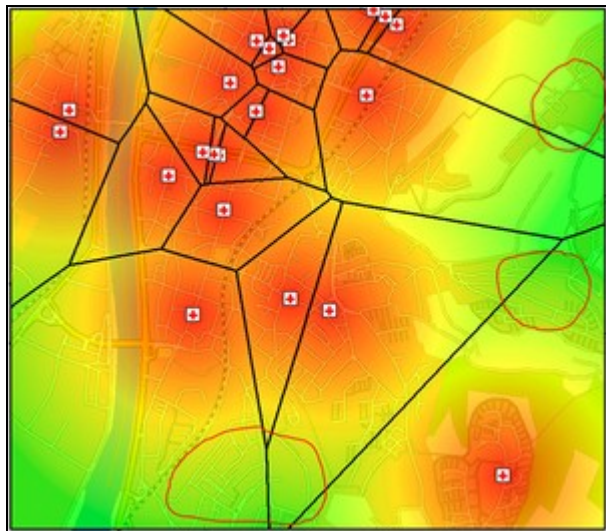
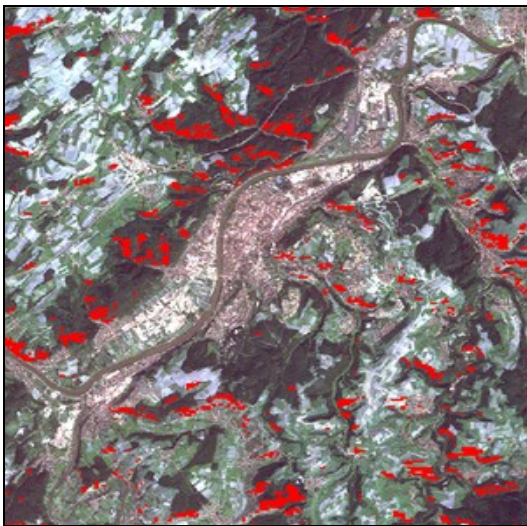
ArcGIS analyzes the Earth's surface and identifies unknown shady subsoil. The causes of soil degradation will be updated and the benefits of this analysis will be put to good use in the following areas:

- Engineers and architects of urbanization will consider these results before choosing venues ideal for the realization of basic infrastructure such as:
 - The construction of real estates, roads, hospitals, bridges, voice tracks, schools, ports, river etc.
 - Security measures and security of citizens will be involved.
 - The risk of accidents will be minimized.
 - The substantial reduction in project costs through efficient work will be achieved.

b- ArcGIS protects and warns you against natural disasters such as:

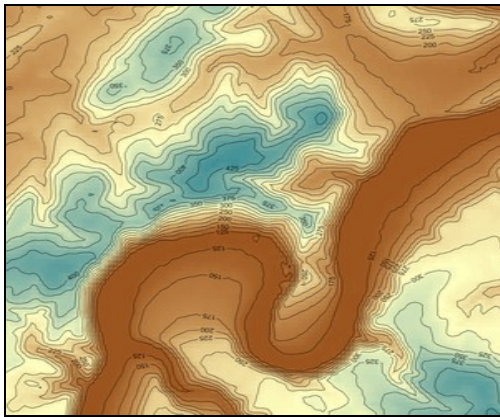
- Landslides.
- The sinking of roads.
- The destruction of bridges due to water infiltration.
- The problem of water in airports (puddle of water on the runway).

- The damage of buildings and residential properties due to the porous walls.
- The liquefaction, the destruction of dams which retained water.



c- Areas of application for the ArcGIS

- This method can be applied in territorial planning.
- In the planning and construction of basic infrastructure such as:
 - The social habitats, roads, pipelines, airports, deepwater ports, sports complexes, the railway routes, etc.
- In the planning and construction of mines and industrial buildings.
- In agriculture and forestry.
- In the management of natural disasters.
- In the control and auditing of projects.



❖ 5- The Sales & Marketing of Che amphibian's airplanes

Any water surface may serve as your 'airfield', providing it is at least 0.5 m deep and 200 m long. This is what makes the *Che* planes indispensable in the areas with very few roads available, but where lakes and rivers abound. Owners of estates 300-500 km away from urban communities will find these planes particularly handy, as they are easy to disassemble and to transport in a car trailer.

Hydroplane *Che-23* is capable of making it to a flat shore on its own landing gear and, after taking whatever there is to take aboard, make it back into the water on its own. With the landing gear retracted, it can take-off from a water body regardless of waves up to 0.5 m high.

Customized *Che-23* may have an integrated navigation system consistent with Class IV airplanes, which makes it suitable for missions within framework of the national economy.



Hydroplane *Che-23* is suitable for:

- transportation of passengers, mail, cargo, baggage;
- flight training;
- emergency sanitary design assignments;
- patrolling the gas-, oil and electric power lines;
- summertime forest patrol missions;
- water areas patrol mission for purposes of environmental control;
- fishery supervision patrol missions;
- patrol missions to service deer farms;
- natural preserves patrol missions;
- special works at lakes aimed at rescue of fishers from ice-floats.



We will happy to present to you in details our quality “Made in Germany” products and services, so you can judge for yourself and enjoy the performance of these new advanced technology designed and built by German engineers.

Pending a positive response, accept the assurances of our highest consideration.

Contacts:



Michael Hartmann
CEO



Camille Tchitchi
Managing Director - International



Georg Rubnitsch
Director - Russia

Headquarters

MedialectriX AG
Sunneweg 6
CH-8617 Mönchaltorf
Switzerland

Tel.: +41 277 85 18
Fax: +41 277 85 20

Distribution & Services

MedialectriX AG
Rotenwaldstrasse 158
70197 Stuttgart- Germany

Tel.: +49 (0) 711 35 14 48-76
Fax: +49 (0) 711 35 14 48-79
Mobile: +49 (0) 178 65 95 168

**Firma MEGAVISION LTD,
Russia Moscow**

Tretia Ulitsa Yamskogo Pola
2/7 Office 14

Tel: +7 945 506 38 14
Tel: +7 964 585 33 35
E-mail : georu777@gmail.com

E-mail: c.tchitchi@medialectrix.eu

Web site: www.medialectrix.eu
www.e-saver.eu

MedialectriX AG - Our active, favourable and efficient contribution to a healthy environment, thanks to the transformer eSaver!